

UPRRP 2018

How to Fund Your Graduate Education **START NOW!**

Presented by

Patti Ordóñez, PhD

NSF GRFP Recipient



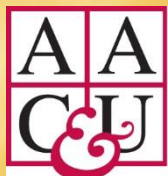
Graduate Research Fellowship Operations Center





Desperation brings inspiration!!!

FORD FOUNDATION FELLOWSHIP PROGRAM



National Science Foundation Graduate Research Fellowship Program
 Information: www.nsf.gov/grfp and www.nsfgrfp.org
 Apply at: www.fastlane.nsf.gov/grfp/



Seminar Outcomes

- Inform you of graduate funding opportunities
- Introduce several domestic and international fellowships
- Guide preparation of winning applications
- Discuss Personal Statement and Proposal
- Brainstorm on Personal Statements

LUNCH

- Begin to write Personal Statements

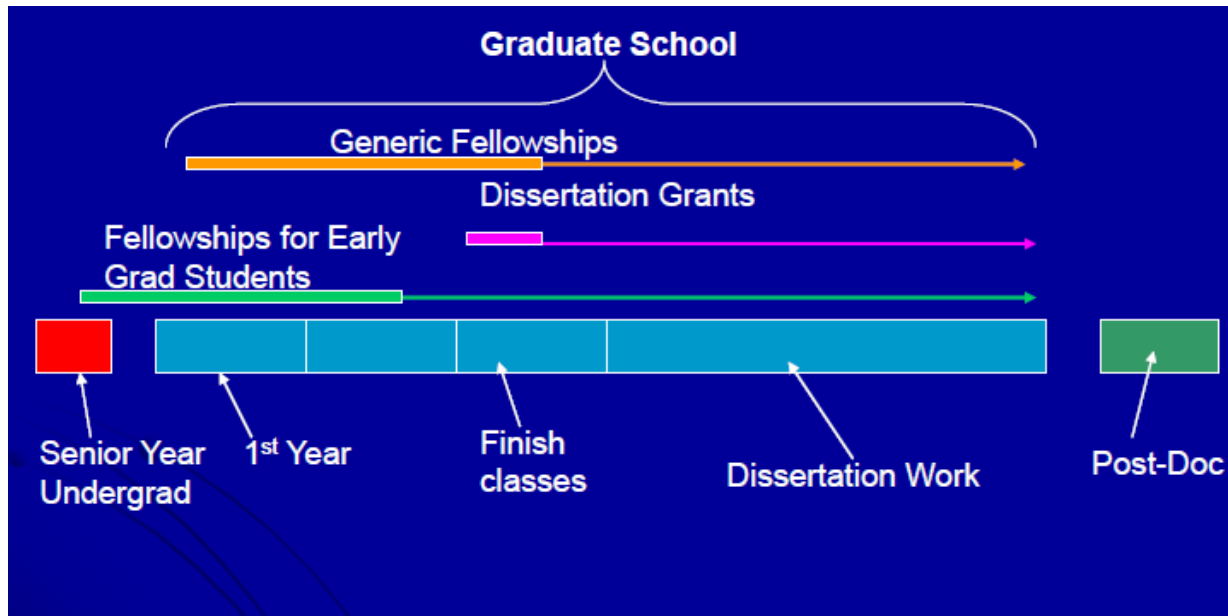


<http://ccom.uprrp.edu/~pordonez/NSFworkshop>



When can I get the money?

- Continuum



Where is the money?

- Assistantships vs. Fellowships
- Types of Fellowships
 - University - BD, GAANN/Jacob Javits, Meyerhoff
 - State & Regional – SREB, local congressmen
 - Private - Hertz, Ford, Hughes, Woodrow Wilson, Jack Kent Cooke
 - Industry - Honda, IBM, GEM...
 - Agency - NASA, EPA, DHS, DoEd, DoEnergy, DOD, Air Force
 - National/International - NSF GRFP/Fulbright



The Good, the Bad and the Ugly

	University Fellowship	Advisor Support	External Funding
Choose the advisor YOU want	May vary	Difficult to change advisors	Easier to change advisors
Advisor runs out of money	Department may support student, may need to switch advisors, sometimes dismissal	You or advisor need to come up with new source of funding	You will still be paid!
Partial funding	First year only	At advisor's discretion	Many fellowships for 3+ years
Teaching requirement	Usually	At advisor's discretion (may ask you to teach to supplement their financial support)	NO
Makes you more competitive for (academic) jobs	No	No	YES

National Science Foundation Graduate Research Fellowship Program

Information: www.nsf.gov/grfp and www.nsfgrfp.org

Apply at: www.fastlane.nsf.gov/grfp/



Show me the money...

- <http://www.ncsu.edu/grad/financial-support/fellowships.html>
(fellowships by deadline date)
- <http://gradschool.umbc.edu/funding/fellowships/>
- <http://www.finaid.com/> and <http://www.fastweb.com/>
- <https://bigfuture.collegeboard.org/scholarship-search>
- http://sites.nationalacademies.org/pga/Fellowships/PGA_046301
- <http://hsf.net/en/scholarships/programs/>
- <https://scholarships.uncf.org/>
- <http://www.scholarshipexperts.com/>
- <http://fulbrightonline.org/> (International)
- http://ww2.kdp.org/images/PC_Resources/Finding_Funding_for_Grad_School.pdf



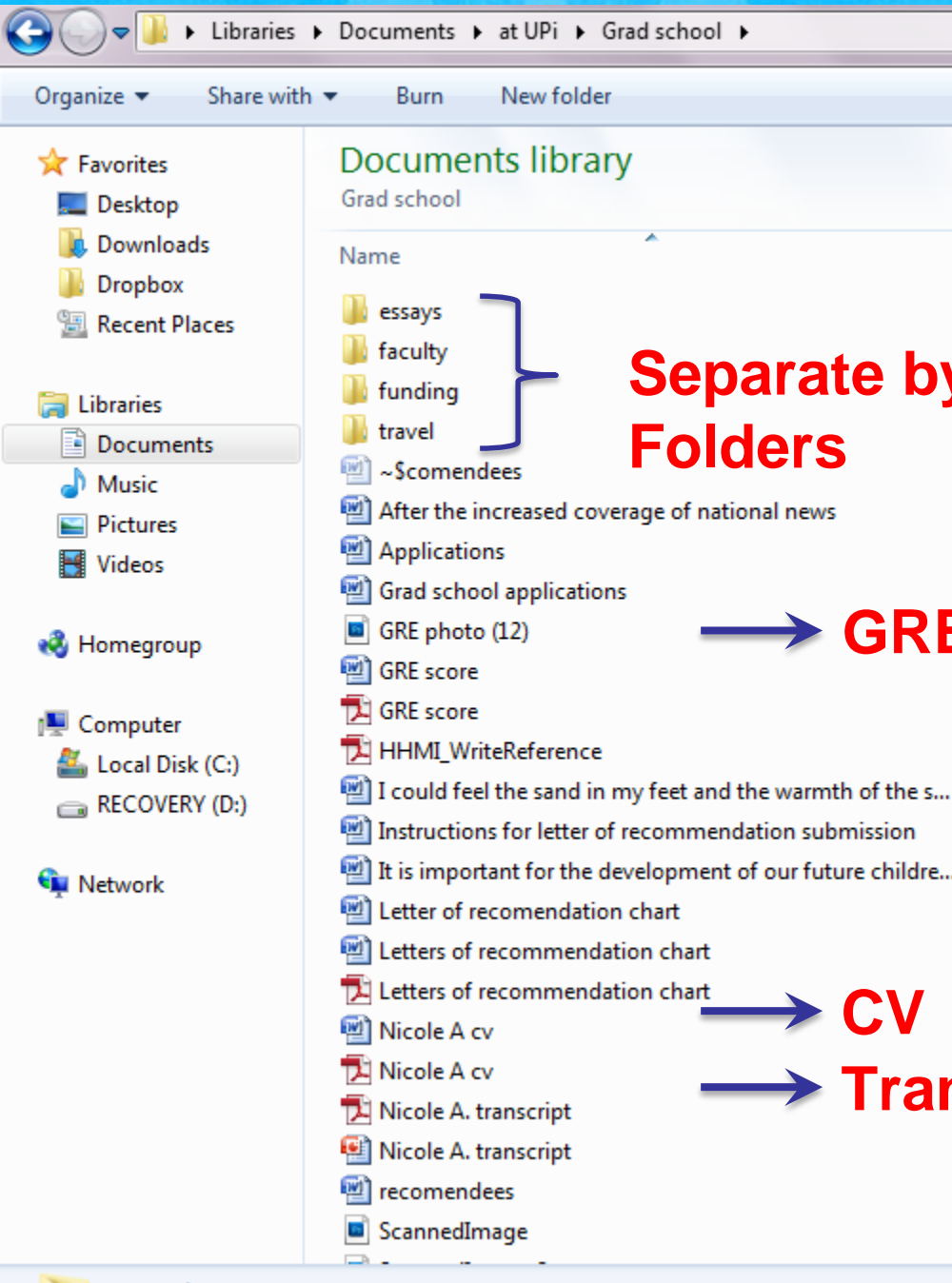
International style money

- Websites to help you find the money
 - <http://www.ncsu.edu/grad/financial-support/fellowships.html>
(fellowships by deadline date)
 - <http://www.hhmi.org/programs/international-student-research-fellowships>
 - <http://www.conacyt.gob.mx/index.php/becas-y-posgrados>
 - <http://www.scholarshipportal.com/>
 - <http://www.echoinggreen.org/fellowship/echoing-green-fellowship>
 - http://sites.nationalacademies.org/pga/Fellowships/PGA_046301
 - <http://www.scholarshipexperts.com/>
 - <http://www.intlstudent.org/scholarships.html>
 - <http://foreign.fulbrightonline.org/>
 - http://www.foreignborn.com/study_in_us/8-paying4school.html



Organize Yourself





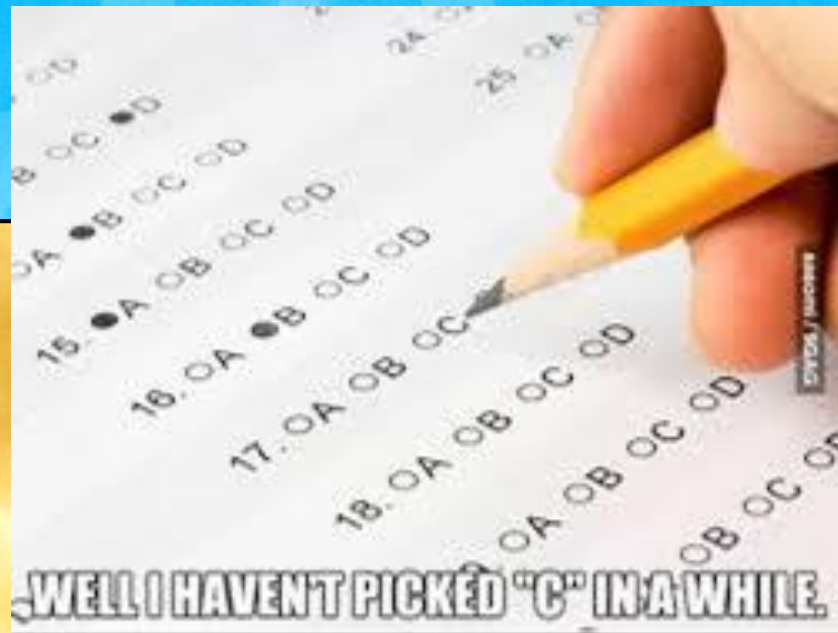
**Separate by
Folders**

GRE Scores

CV

Transcript





Keep Track

- Universities
- Links
- Usernames
- Passwords
- Essay questions
- Transcript submission instructions
- Application submission instruction
- Color coordinated (helps!)



Link	username	deadline	Statement of Purpose	Research Experiences	TOEFL	GRE	Transcripts	Garcia	Marshall	Rudnick
https://apply.ucsf.edu/gradu	edwin_rosado5@upr.ed	1-Dec	650 words	650 words	X	X	HardCopy	XX	XX	XX
http://studentaffairs.stanfo	edwin_rosado5@upr.ed	3-Dec	Two pages in length		X	X	HardCopy	XX	XX	XX
https://app.applyyourself.c	ZC267M3365N	2-Dec			X	X	HardCopy	XX	XX	XX
https://www.yale.edu/grad	85ZA48MF539	1-Dec			X	X	online	XX	XX	XX
https://app.applyyourself.c	edwin_rosado5	2-Dec			X	X	Del and onlin	XX	XX	XX
http://www.rackham.umich.edu/prospective-stude		1-Dec			X	X	online	XX	XX	XX
https://gradapply.mit.edu/t	edwinrosado5	1-Dec			X	X	online	XX	XX	XX



Sample Charts

Link	username	deadline	Statement of Purpose	Research Experiences	TOEFL	GRE	Transcripts	Garcia	Marshall	Rudnick
https://apply.ucsf.edu/graduate	edwin.rosado5@upr.edu	1-Dec	650 words	650 words	X	X	HardCopy	XX	XX	XX
http://studentaffairs.stanford.edu	edwin.rosado5@upr.edu	3-Dec	Two pages in length		X	X	HardCopy	XX	XX	XX
https://app.applyyourself.com	ZC267M3365N	2-Dec			X	X	HardCopy	XX	XX	XX
https://www.vale.edu/graduate	85ZA48MF539	1-Dec			X	X	online	XX	XX	XX
https://app.applyyourself.com	edwin.rosado5	2-Dec			X	X	Del and online	XX	XX	XX
http://www.rackham.umich.edu/prospective-student		1-Dec			X	X	online	XX	XX	XX
https://gradapply.mit.edu/	edwinrosado5	1-Dec			X	X	online	XX	XX	XX

Fellowship	Letter Submission	Deadline
NSF GRFP	Recommendation letter must be submitted electronically via the web application system. Automated email will be sent with detailed instructions for submitting the letter.	November 14 th , 2013
Ford Foundation Fellowship Program- <u>Predoctoral</u> Competition	Recommendation letter must be submitted electronically via the web application system. Automated email will be sent with detailed instructions for submitting the letter.	January 9 th , 2014

Graduate Program	Letter Submission	Deadline
UCSF Biomedical Sciences BMS	Recommendation letter must be submitted electronically via the web application system. Automated email will be sent with detailed instructions for submitting the letter.	December 1 st , 2013
Yale Combined Program in the Biological and Biomedical Sciences (BBS)	Recommendation letter must be submitted electronically via the web application system. Automated email will be sent with detailed instructions for submitting the letter.	December 1 st , 2013
University of Pennsylvania- Biomedical Graduate Studies	Recommendation letter must be submitted electronically via the web application system. Automated email will be sent with detailed instructions for submitting the letter.	December 2 nd , 2013
Stanford University- Stem Cell Biology and Regenerative Medicine	Recommendation letter must be submitted electronically via the web application system. Automated email will be sent with detailed instructions for submitting the letter.	December 3 rd , 2013



Sample Charts

University	Program or Department	How to submit the letter	Deadline
Washington University at St Louis	Division of Biology and Biomedical sciences (DBBS)	Submit online. An email will be sent to the recommender.	As soon as possible but before November 23, 2012
NSF GRFP	-	Submit online. An email will be sent to the recommender.	November 27, 2012
MIT	Department of Biology	Submit online. An email will be sent to the recommender.	December 1, 2012
UT Southwestern	Graduate School of Biomedical Sciences	Submit online. An email will be sent to the recommender	December 1, 2012
UC Berkeley	Molecular and Cell Biology	Submit online. An email will be sent to the recommender.	December 1, 2012
UC San Diego	Division of Biological	Submit online. An email	December 1, 2012

Libraries Documents at UPI Grad school funding NSF GRFP

Organize Share with Burn New folder

Documents library NSF GRFP

27.full Many Drafts!! 11/4/2012 7:43 PM

nicotinic_ach_receptors_review 11/4/2012 4:43 PM

NS NSF personal statement (Nicole A.) 11/16/2012 5:36 PM

NS NSF research experience (Nicole A.) 11/16/2012 5:45 PM

NS NSF research proposal revised draft (Nicole A.) 11/16/2012 6:13 PM

NSF GRFP personal statement (Nicole A.) 11/16/2012 5:37 PM

NSF GRFP research experience (Nicole A.) 11/16/2012 5:46 PM

NSF GRFP research proposal (Nicole A.) 11/16/2012 6:02 PM

NSF GRFP Many Mentors!! 11/12/2012 7:33 PM

NSF personal statement (Nicole A.) 11/10/2012 3:02 PM

NSF personal statement 11/4/2012 1:13 PM

NSF personal statement_EAP_NA1 11/4/2012 3:32 PM

NSF personal statement_EAP_NA1_EAP 11/5/2012 9:29 AM

NSF personal statement_EAP_NA1_EAP_NAS 11/5/2012 10:00 AM

NSF personal statement_EAP_NA1_EAP_NAS_EAP 11/6/2012 12:04 PM

NSF personal statement_EAP_NA1_EAP_NAS_EAP_NAS 11/6/2012 12:04 PM

NSF research experience (Nicole A.) 11/10/2012 3:00 PM

NSF research experience 11/5/2012 2:01 PM

NSF research experience_EAP 11/6/2012 11:51 AM

NSF research experience_EAP_NAS 11/6/2012 11:51 AM

NSF research proposal (Nicole A.) 11/10/2012 3:03 PM

NSF research proposal draf1 11/5/2012 8:51 AM

NSF research proposal draf1_EAP 11/6/2012 12:06 PM

NSF research proposal draf2 11/9/2012 11:04 AM



Many Mentors

- Identify mentors that are **eager** to be exposed to your **ideas** and **willing to guide** you during the process.
- Choose those mentors that encourage **strategic thinking and creativity** while imparting a **set of skills**.
- Mentors **in and outside** of your field of study.

National Science Foundation Graduate Research Fellowship Program

Information: www.nsf.gov/grfp and www.nsfgrfp.org

Apply at: www.fastlane.nsf.gov/grfp/





National Science Foundation

The NSF Graduate Research Fellowship Program



Graduate Research Fellowship Program Operations Center



Complete Application

NSF FastLane

- Personal, Relevant Background and Future Goals Statement (3 pages)
- Graduate Research Statement (2 pages)
- Transcripts, uploaded into FastLane
- **Three** letters of reference required
- Additional information required for some candidates
See Solicitation for eligibility requirements (available on www.nsfgrfp.org)

National Science Foundation Graduate Research Fellowship Program

Information: www.nsf.gov/grfp and www.nsfgrfp.org

Apply at: www.fastlane.nsf.gov/grfp/



GRFP General Eligibility



- U.S. citizens, nationals, and permanent residents
- Early-career students
- Pursuing research-based MS or PhD in NSF fields
- Enrolled in accredited U.S. institution by fall 2019
- Applicants must **self-certify in the application** that they meet the GRFP Eligibility criteria

National Science Foundation Graduate Research Fellowship Program

Information: www.nsf.gov/grfp and www.nsfgrfp.org

Apply at: www.fastlane.nsf.gov/grfp/



GRFP General Eligibility

U.S. citizens, nationals and permanent residents that will be enrolled in an accredited STEM research-based graduate program in the Fall.

Academic levels:

- **Seniors with no graduate study yet**
- **Graduate students can apply 1 TIME ONLY in graduate school either as:**
 - First-year graduate students **OR**
 - Second-year graduate students (≤ 12 months of graduate study by August)
 - Greater than 12 months of graduate study, **with interruption in graduate study of 2 or more years** (can have MS degree)

National Science Foundation Graduate Research Fellowship Program

Information: www.nsf.gov/grfp and www.nsfgrfp.org

Apply at: www.fastlane.nsf.gov/grfp/



GRFP Cycle



- **Application:** Available online August
- **Deadlines:** Late October, early November (varies by field)
- **Awards:** Announced late March to early April
- **Best Time to Start Preparing: Now**

National Science Foundation Graduate Research Fellowship Program

Information: www.nsf.gov/grfp and www.nsfgrfp.org

Apply at: www.fastlane.nsf.gov/grfp/



2019 GRFP Deadlines

2019 Deadlines:

- October 22, 2018 (Monday) Life Sciences, Geosciences
- October 23, 2018 (Tuesday) Computer and Info Science and Engineering, Engineering, Materials Research
- October 25, 2018 (Thursday) Psychology, Social Sciences, STEM Education and Learning
- October 26, 2018 (Friday) Chemistry, Mathematical Sciences, Physics and Astronomy
- November 1, 2018 (Thursday) Reference Letter Deadline

All documents are due by 5pm EST

National Science Foundation Graduate Research Fellowship Program

Information: www.nsf.gov/grfp and www.nsfgrfp.org

Apply at: www.fastlane.nsf.gov/grfp/



NSF Graduate Research Fellowship Program Goals



- To increase the Nation's human capacity in science and engineering by providing fellowships for early-career graduate students who pursue research-based master's and doctoral degrees in NSF-supported disciplines
- To support the development of a diverse and globally engaged US science and engineering workforce



National Science Foundation Graduate Research Fellowship Program

Information: www.nsf.gov/grfp and www.nsfgrfp.org

Apply at: www.fastlane.nsf.gov/grfp/



GRFP Key Elements

- Five Year Award – \$138,000
- Three years of financial support
 - \$34,000 Stipend per year
 - \$12,000 Educational allowance to institution per year
- International research through **GROW**
- Internships through **GRIP**
- Access to **XSEDE** cyberinfrastructure resources



Perform research through the GRFP in countries such as Chile, Denmark, Finland, France, Ireland, Japan, the Netherlands, Norway, Singapore, South Korea, Sweden and Switzerland!

National Science Foundation Graduate Research Fellowship Program

Information: www.nsf.gov/grfp and www.nsfgrfp.org

Apply at: www.fastlane.nsf.gov/grfp/



GRFP Unique Features

- Flexible: choice of project, advisor & program
- Unrestrictive: No service requirement
- Portable: Any accredited U.S. institution
MS → PhD
- 2,000 Fellowships offered annually out of 14,000, 2010 - 2013
~17% success rate

National Science Foundation Graduate Research Fellowship Program

Information: www.nsf.gov/grfp and www.nsfgrfp.org

Apply at: www.fastlane.nsf.gov/grfp/



GRFP Supported Disciplines

- Chemistry
- Computer and Information Science and Engineering
- Engineering
- Geosciences
- Life Sciences
- Materials Research
- Mathematical Sciences
- Physics and Astronomy
- Psychology
- Social Sciences
- Science, Technology, Engineering and Mathematics Education (research-focused)



National Science Foundation Graduate Research Fellowship Program

Information: www.nsf.gov/grfp and www.nsfgrfp.org

Apply at: www.fastlane.nsf.gov/grfp/



Not Supported by NSF GRFP

- Business administration or management
- Social work
- Medical, dental, law, or public health programs
- Joint science-professional degree programs, e.g., MD/PhD, JD/PhD, etc.
- Education (except research-focused STEM Education programs)
- **See Solicitation** (www.nsfgrfp.org)



National Science Foundation Graduate Research Fellowship Program

Information: www.nsf.gov/grfp and www.nsfgrfp.org

Apply at: www.fastlane.nsf.gov/grfp/





Review Criteria

Two National Science Board-approved Review Criteria:

- **Intellectual Merit:** this criterion encompasses the potential to advance knowledge
- **Broader Impacts:** this criterion encompasses the potential to benefit society and contribute to the achievement of specific, desired societal outcomes

National Science Foundation Graduate Research Fellowship Program

Information: www.nsf.gov/grfp and www.nsfgrfp.org

Apply at: www.fastlane.nsf.gov/grfp/



Intellectual Merit and Broader Impacts Assessment

- Personal, Relevant Background and Future Goals Statement
- Graduate Research Statement
- Reference Letters
- Transcripts



National Science Foundation Graduate Research Fellowship Program

Information: www.nsf.gov/grfp and www.nsfgrfp.org

Apply at: www.fastlane.nsf.gov/grfp/





The following elements should be considered in the review for both criteria:

1. What is the potential for the proposed activity to
 - A. Advance knowledge and understanding within its own field or across different fields (Intellectual Merit); and
 - B. Benefit society or advance desired societal outcomes (Broader Impacts)?
2. To what extent do the proposed activities suggest and explore creative, original, or potentially transformative concepts?
3. Is the plan for carrying out the proposed activities well-reasoned, well-organized, and based on a sound rationale? Does the plan incorporate a mechanism to assess success?
4. How well qualified is the individual, team, or organization to conduct the proposed activities?
5. Are there adequate resources available to the PI (either at the home organization or through collaborations) to carry out the proposed activities?

National Science Foundation Graduate Research Fellowship Program

Information: www.nsf.gov/grfp and www.nsfgrfp.org

Apply at: www.fastlane.nsf.gov/grfp/



Intellectual Merit

Panelists may consider the following with respect to the **Intellectual Merit** Criterion:

- the potential of the applicant to advance knowledge based on the totality of the content in the application, including the strength of the academic record, the proposed plan of research, the description of previous research experience or publication/presentations, and references

National Science Foundation Graduate Research Fellowship Program

Information: www.nsf.gov/grfp and www.nsfgrfp.org

Apply at: www.fastlane.nsf.gov/grfp/



Broader Impacts

Panelists may consider the following with respect to the **Broader Impacts** Criterion:

- the potential for future broader impacts as indicated by personal, professional, and educational experiences

National Science Foundation Graduate Research Fellowship Program

Information: www.nsf.gov/grfp and www.nsfgrfp.org

Apply at: www.fastlane.nsf.gov/grfp/



Preparing a Competitive Application

Choose at least three reference writers

- Give them ample time
- Must know you as a scientist and personally
- Share your application materials and the merit review criteria (Intellectual Merit and Broader Impacts)
http://nsfgrfp.org/reference_writers/requirements/
- Track letter submission using FastLane
- Must have 2 letters but no more than 3
- <http://renettatull.wordpress.com/2011/03/03/youve-just-asked-for-a-letter-of-recommendation-now-i-need-some-things-from-you/>

National Science Foundation Graduate Research Fellowship Program

Information: www.nsf.gov/grfp and www.nsfgrfp.org

Apply at: www.fastlane.nsf.gov/grfp/



Preparing a Competitive Application

1. Read the Solicitation carefully – Are you eligible? What are requirements?
2. Address the Review Criteria (two NSF Merit Review Criteria - Intellectual Merit and Broader Impacts throughout)
3. Check for spelling and grammatical errors
4. Verify statements and transcripts uploads
5. For NSF, you must self-certify your eligibility according to the criteria in the Solicitation and that is your original work
6. Make sure you Press “Submit” button
7. Regularly check application status for # of reference letters
8. Make sure you are enrolled in graduate school by Fall 2019

National Science Foundation Graduate Research Fellowship Program

Information: www.nsf.gov/grfp and www.nsfgrfp.org

Apply at: www.fastlane.nsf.gov/grfp/



Evaluation of applications

- Panelists are academic and research experts in general discipline, not necessarily in your research topic
- Panelists rate your application using the two Merit Review Criteria, Intellectual Merit and Broader Impacts
- NSF requests panelists to provide constructive comments (applicants receive anonymous copies of the reviews)
- Panels make recommendations to NSF
- NSF awards fellowships and honorable mentions

National Science Foundation Graduate Research Fellowship Program

Information: www.nsf.gov/grfp and www.nsfgrfp.org

Apply at: www.fastlane.nsf.gov/grfp/



Insight From An Experienced Panelist

Common Reasons Applicants Not Successful:

- Poor Broader Impacts
- Choice of prestigious school over research-matched school
- Inappropriate or uninformative references
- Weak personal statement



National Science Foundation Graduate Research Fellowship Program

Information: www.nsf.gov/grfp and www.nsfgrfp.org

Apply at: www.fastlane.nsf.gov/grfp/





Resources at nsfgrfp.org



- Tips for applying
- Frequently asked questions (FAQ)
- Find GRFP contacts
- Important links for the GRFP
- Panelist registration

National Science Foundation Graduate Research Fellowship Program

Information: www.nsf.gov/grfp and www.nsfgrfp.org

Apply at: www.fastlane.nsf.gov/grfp/





Resources at Your University



Facebook
@cdcluprrp



TUTORÍAS Y TALLERES
en inglés y español

📍 ERA 101

lunes - jueves: 8:00 a.m. - 5:00 p.m.

viernes: 8:00 a.m. - 11:30 a.m.

National Science Foundation Graduate Research Fellowship Program

Information: www.nsf.gov/grfp and www.nsfgrfp.org

Apply at: www.fastlane.nsf.gov/grfp/





More NSF Resources

NSF GRFP Website (nsf.gov/grfp)

- Solicitation
- FAQ and Guide links

[Fastlane.nsf.gov/grfp](http://fastlane.nsf.gov/grfp)

- Online application, user guides, official announcements

Phone and email

- 866-NSF-GRFP (673-4737)
info@nsfgradfellows.org

And ...

- Research Mentors
- Former panelists
- Program coordinators
- Professors
- NSF GRFP recipients
- Family
- Friends

National Science Foundation Graduate Research Fellowship Program

Information: www.nsf.gov/grfp and www.nsfgrfp.org

Apply at: www.fastlane.nsf.gov/grfp/



More External Resources

- NSF GRFP Winning Essays

<http://tinyurl.com/NSFGRFPExamples>

- Insights on Fellowship

<http://grfpessayinsights.missouri.edu/>

- Self-Scoring Rubric for Essays

https://www.research.msstate.edu/rresources/pdf/NSF_fellowship_rubric.pdf

National Science Foundation Graduate Research Fellowship Program

Information: [**www.nsf.gov/grfp**](http://www.nsf.gov/grfp) and [**www.nsfgrfp.org**](http://www.nsfgrfp.org)

Apply at: [**www.fastlane.nsf.gov/grfp/**](http://www.fastlane.nsf.gov/grfp/)



Win by Believing in Yourself, Your Community, and Your Talents

Avoid Self-Disqualification

- All other applicants are “more qualified”
- Research, activities, or contributions are not impressive enough
- Not enough experience
- Not able to express things well



NSF funds studies of emperor penguins who are rife with belief in themselves

National Science Foundation Graduate Research Fellowship Program

Information: www.nsf.gov/grfp and www.nsfgrfp.org

Apply at: www.fastlane.nsf.gov/grfp/



Apply to Win

Applying always produces a winning result!

Besides feedback on your ideas from experts, it is great preparation for:

- Other award applications
- Graduate school applications
- Job applications
- Writing publications
- Professional connections

...and you just might win the fellowship too!



2,000 Awards
14,000
Applications
reviewed
~ 17% Success

National Science Foundation Graduate Research Fellowship Program

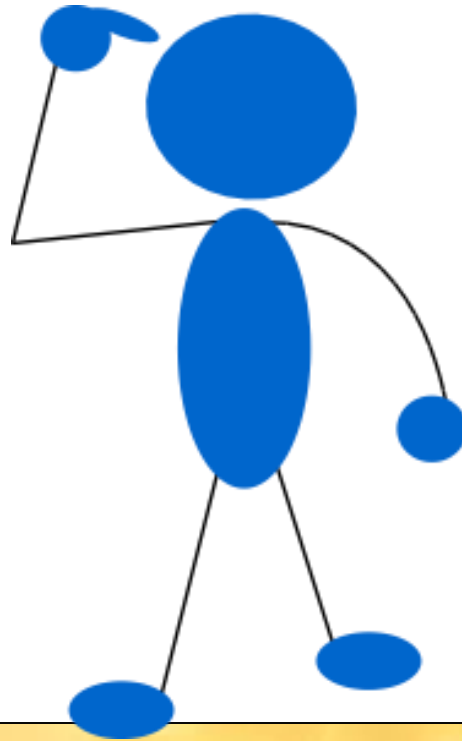
Information: www.nsf.gov/grfp and www.nsfgrfp.org

Apply at: www.fastlane.nsf.gov/grfp/



Reflection

- **What** is graduate funding and **Why** is it important to try to fund your graduate education?



<http://ccom.uprrp.edu/~pordonez/NSFworkshop>

National Science Foundation Graduate Research Fellowship Program

Information: www.nsf.gov/grfp and www.nsfgrfp.org

Apply at: www.fastlane.nsf.gov/grfp/



Complete Application

NSF FastLane

- Personal, Relevant Background and Future Goals Statement (3 pages)
- Graduate Research Statement (2 pages)
- Transcripts, uploaded into FastLane
- **Three** letters of reference required
- Additional information required for some candidates
See Solicitation for eligibility requirements (available on www.nsfgrfp.org)

National Science Foundation Graduate Research Fellowship Program

Information: www.nsf.gov/grfp and www.nsfgrfp.org

Apply at: www.fastlane.nsf.gov/grfp/



Personal, Relevant Background and Future Goals Statement (3 pages)

- **How do you envision graduate school preparing you for a career that allows you to contribute to expanding scientific understanding as well as broadly benefit society?** Describe your personal, educational and/or professional experiences that motivate your decision to pursue advanced study in science, technology, engineering or mathematics (STEM). Include specific examples of any research and/or professional activities in which you have participated. Present a concise description of the activities, highlight the results and discuss how these activities have prepared you to seek a graduate degree. Specify your role in the activity including the extent to which you worked independently and/or as part of a team. Describe the contributions of your activity to advancing knowledge in STEM fields as well as the potential for broader societal impacts (See Solicitation, Section VI, for more information about BI)

National Science Foundation Graduate Research Fellowship Program

Information: www.nsf.gov/grfp and www.nsfgrfp.org

Apply at: www.fastlane.nsf.gov/grfp/



Essay Critique

Before

After


National Science Foundation Graduate Research Fellowship Program

Information: www.nsf.gov/grfp and www.nsfgrfp.org

Apply at: www.fastlane.nsf.gov/grfp/



Tips to an Award-winning NSF GRFP Personal Statement

- Make it personal, make it yours! You have a UNIQUE perspective!
- Scientific, not flowery.
- Show your passion. SHOW IT, DON'T TELL IT!
- Describe your most important research experiences and connect them to your personal experiences. -> INTELLECTUAL MERIT
- Specify throughout your essay:
 - WHY do you want to go to grad school?
 - WHAT are your future goals after grad school?
 - WHICH research topics interest you the most?
 - WHAT kinds of unique insights may you offer as a minority student? 
 - HOW will the NSF GRFP help you achieve your goals?
 - HOW you will give back to the community? -> BROADER IMPACTS
- Proofread, proofread, proofread.

Graduate Research Plan (2 pages)

Present an **original research topic** that you would like to pursue in graduate school. **Describe the research idea, your general approach**, as well as any unique resources that may be needed for accomplishing the research goal (i.e., access to national facilities or collections, collaborations, overseas work, etc.) You may choose to include important literature citations. Address the **potential** of the **research to advance knowledge** and understanding within science as well as the potential for **broader impacts** on society. The research discussed must be in a field listed in the Solicitation (Section X, Fields of Study).

National Science Foundation Graduate Research Fellowship Program

Information: www.nsf.gov/grfp and www.nsfgrfp.org

Apply at: www.fastlane.nsf.gov/grfp/



Guide to a successful research proposal

- Read and know the research field of your project
 - Where is the field moving?
 - What is the next step of your research project from a summer program or at your home institution?
- Brainstorming on the different project ideas
- Discuss your research plans with your mentors
- Key points:
 - Novel approaches
 - In depth
 - Realistic plan

National Science Foundation Graduate Research Fellowship Program

Information: www.nsf.gov/grfp and www.nsfgrfp.org

Apply at: www.fastlane.nsf.gov/grfp/



FORD FOUNDATION FELLOWSHIPS AND GRANTS

National Science Foundation Graduate Research Fellowship Program

Information: www.nsf.gov/grfp and www.nsfgrfp.org

Apply at: www.fastlane.nsf.gov/grfp/



Ford Foundation Deadlines

The online application for the 2019 Ford Foundation Fellowship Programs will open on September 4, 2018.

2019 Competition Deadlines:

2019 Predoctoral application deadline:

December 13, 2018

5:00 PM Eastern Standard Time (EST)

2019 Dissertation and Postdoctoral application deadlines:

December 6, 2018

5:00 PM Eastern Standard Time (EST)

Supplementary Materials deadline for submitted applications:

January 8, 2019

5:00 PM Eastern Standard Time (EST)

Notification of 2019 awards:

March 2019

National Science Foundation Graduate Research Fellowship Program

Information: www.nsf.gov/grfp and www.nsfgrfp.org

Apply at: www.fastlane.nsf.gov/grfp/



GRFP Recipients from PR

18 PUERTO RICO HOY

EL NUEVO DÍA
Viernes, 18 de abril de 2014

PUERTO RICO HOY 19



MARIEL CORADIN

- País: República Dominicana.
- Institución: Universidad de Pensilvania.
- Estudios: Curso doctorado en biofísica molecular.

JOSÉ VARGAS

- Pueblo: Caguas.
- Institución: Duke University (Carolina del Norte).
- Estudios: Curso doctorado en microbiología.

KEYLA M. BADILLO

- Pueblo: San Juan.
- Institución: Stanford University School of Medicine.
- Estudios: Curso doctorado en genética.

VÍCTOR O. SANTOS

- Pueblo: Bayamón.
- Institución: Universidad de Purdue (Indiana).
- Estudios: Curso doctorado en ingeniería de software.

RICARDO CRUZ

- Pueblo: Manatí.
- Institución: Georgia Institute of Technology.
- Estudios: Bioingeniería.

"Tengo que demostrar que sí se puede. Ha sido un esfuerzo bastante grande, siempre tuve el apoyo de mis compañeros y de mi mamá"

"La agencia ha depositado su confianza en cada uno de nosotros de poder ser líderes en nuestros respectivos campos de las ciencias"

"Mis papás probablemente lloraron con esta noticia. Ellos siempre han estado ahí para mí como tremendo soporte"

"Casi no tengo tiempo. Esto es bien intenso. Te levantas, trabajas, coges clases, llegas, haces asignaciones, y los fines de semana, tienes que estudiar"

"Haber ganado la beca me va a facilitar adquirir destrezas y conocimientos que en un futuro desee utilizar para establecer nuevas tecnologías"

EL NUEVO DÍA
Viernes, 18 de abril de 2014



MELISSA ALVARADO

- Pueblo: Manatí.
- Institución: Georgia Institute of Technology.
- Estudios: Curso doctorado en ingeniería biomédica.

JUAN P. ÁLVAREZ

- Pueblo: Orocuív.
- Institución: Universidad de Maryland Eastern Shore.
- Estudios: Curso doctorado en ciencias marinas.

LIZZETTE M. GÓMEZ

- Pueblo: Ino se informó.
- Institución: Georgia Institute of Technology.
- Estudios: Ingeniería química.

EDWIN ROSADO

- Pueblo: Villalba.
- Institución: Universidad de Harvard.
- Estudios: Ciencias biomédicas y biológicas.

WILMARIE MARRERO

- Pueblo: Carolina.
- Institución: Texas A&M University Main Campus.
- Estudios: Química atmosférica.

"Haber recibido la beca me dio energía porque el camino que estamos tomando tiene recompensas, pero es difícil. Me renovó las energías"

"Trabajé de mesero, en un museo, pero regresé a la universidad porque buscaba un mejoramiento profesional"

"Me llena de orgullo al pensar que nosotros, como puertorriqueños, tenemos todavía mucho que aportar, que ofrecer y que mejorar"

"Espero que esta beca me abra las puertas a la mejor educación posible. Voy a una universidad que tiene los laboratorios que estoy buscando"

"En verano de 2010, con la huelga de la UPR, acepté un internado y conocí la universidad y solicité admisión. No estoy sola"

Galardonados por su aportación a la ciencia

chillerato probó el mundo laboral porque necesitaba el dinero.

El trabajo que consiguió fue de mesero. También laboró en un museo. Como empleado "no tuve la mejor experiencia con algunos de mis jefes", dijo el joven, quien también se considera santisabelino.

SEGUNDA OPORTUNIDAD. Al no encontrar lo que anhelaba, Álvarez Rosado decidió regresar a la universidad. "Busco un postgrado en

ingeniería es Wilmarie Marrero, quien busca completar un doctorado en química atmosférica.

La propuesta de esta joven está dirigida a optimizar el uso de un instrumento que mide la concentración de gases tóxicos en la atmósfera.

Marrero, de 24 años, estudió un doctorado en Texas A&M University Main Campus. Es oriunda de Carolina y, al igual que los demás entrevistados, considera que los más retante de sus estudios es que los realizan en lugares lejos de la familia. Los cursos, sin embargo, el apoyo que reciben y la compañía de otros estudiantes boricués.

La adaptación en una universidad extranjera tampoco ha sido fácil para Melissa Alvarado Vélez, de Manatí y quien viaja a Puerto Rico dos veces al año. "No ha sido fácil, pero este premio (beca de la NSF) me da las fuerzas para seguir. También es una responsabilidad porque tengo que represen-

OTROS ESTUDIANTES RECONOCIDOS

Yadrianna Nohaly Acosta Sojo
● Ingeniería Industrial
● Univ. de Michigan Ann Arbor

Kevin A. Colón Negrón
● Bioquímica
● Universidad de San Francisco

Aida Raquel Colón
● Ingeniería eléctrica y electrónica
● Columbia University

Roberto Falcón
● Bioingeniería
● UPR, Mayagüez

Elena Latorras Estévez
● Biología molecular
● Universidad de Washington

Rosa Martínez García
● Neurociencias
● Brown University

Nerymar Ortiz Otero
● Biomédica
● Universidad de Cornell

Mónica Pérez Cuevas
● Ingeniería química
● UPR, Mayagüez

Ángel Javier Santiago López
● Bioingeniería
● UPR, Mayagüez

Justo Juván Torres Rodríguez
● Ingeniería biomédica
● Ohio State University

Lourdes Meriella Delgado Reyes
● Sociología - Universidad de Iowa

Omar Gutiérrez del Arroyo
● Ecología - UPR, Río Piedras

Christian Navarro Torres
● Psicolingüística

Jorge Felipe Ortiz Carpena
● Neurociencias - UPR, Río Piedras

Josyka Meléndez
● Biología
● Universidad de Berkeley

Claudio Lula Morales Pérez
● Biofísica
● Universidad de Texas Southwestern Medical Center

23 ESTUDIANTES

Cantidad de universitarios que recibieron la beca de la Fundación Nacional de las Ciencias. Otros tres alumnos obtuvieron menciones honoríficas.

¿QUÉ ES LA NSF?

- Agencia federal que impulsa investigación y educación fundamental en los campos no médicos de la ciencia y la ingeniería.
- Líder mundial en desarrollo de normativa y certificación de productos, educación y gestión de riesgos para la salud pública.
- Su presupuesto anual ronda

National Science Foundation Graduate Research Fellowship Program

Information: www.nsf.gov/grfp and www.nsfgrfp.org

Apply at: www.fastlane.nsf.gov/grfp/



Reflection

- With what you know now, how are you better prepared to fund your graduate education?



Thank you

Questions?? Feel free to contact us...

- María Ocasio Torres, PhD
mariapr_24@yahoo.com
- Patricia Ordóñez, PhD
pattiordonez@gmail.com
- Diana Silva
dianavsilva@gmail.com

Thanks to Frances Carter-Johnson, CAHSI, Woodrow Winchester, Nicole Aponte, Jorge Ortiz-Carpena, Edwin Rosado for their contributions to this presentation.

PROMISE

Maryland's Alliance for Graduate
Education and the Professoriate



Idibd2k
iDibd2k
idIbd2k
idiBd2k
idibD2k
idibd2k
idibd2K



**This presentation and several other resources can be found
at moodle.com.uprrp.edu in the open course –
“How to fund your graduate education”**

